



Prepared for: John Doe Roofing Company

Phone: 469-850-0009  
E-mail: sales@aerialtakeoff.com

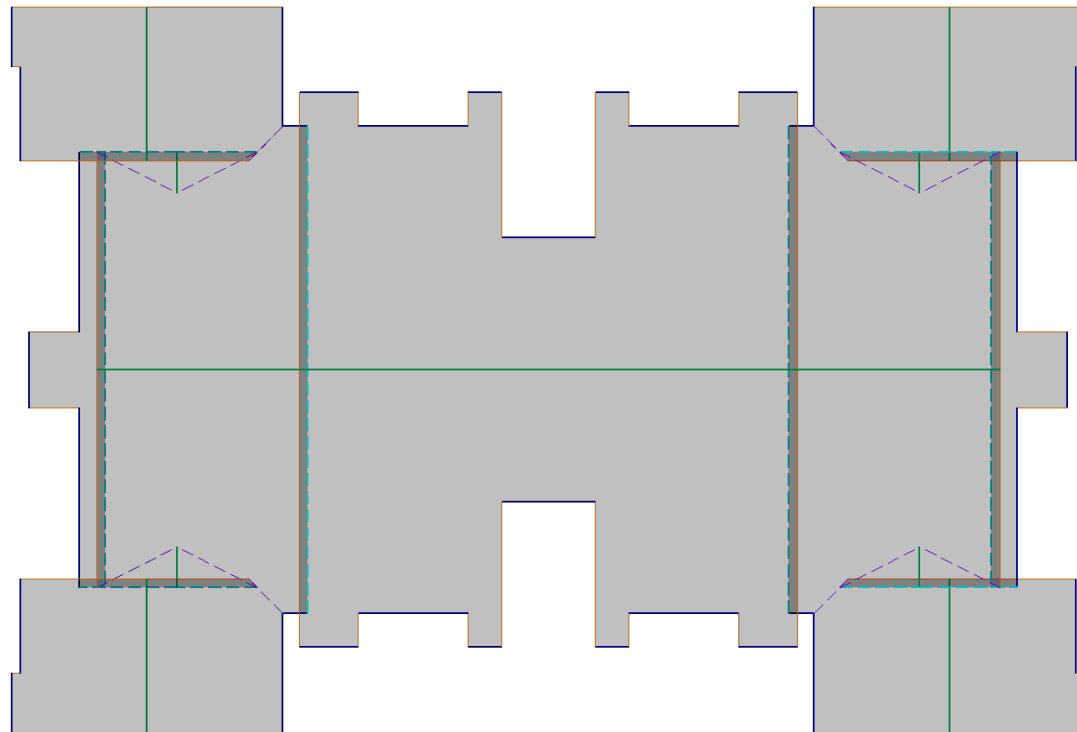
Project Address: 15922 Eldorado Pkwy, Ste 500-537 Frisco TX, 75035 USA

### Project Totals

	All Structures	Structure 1	Structure 2
Area (FT)	9196.08	9196.08	0.00
Slopes		2 : 12, 5 : 12	
Ridges (LF)	200.00	200.00	0.00
Hips (LF)	0.00	0.00	0.00
Valleys (LF)	118.87	118.87	0.00
Rakes (LF)	645.67	645.67	0.00
Eaves (LF)	360.00	360.00	0.00
Drip Edge (LF)	1005.67	1005.67	0.00
Headwall Flashing (LF)	0.00	0.00	0.00
Step Flashing (LF)	316.13	316.13	0.00
Ice & Water Shield (SF)	1080.00	1080.00	0.00
Roof Facets (#)	24	24	0
Roof Squares (SQ)	91.96	91.96	0.00

Additional Notes: None

### Roof Sketch



Facets may appear darker or semi-transparent to reveal overhangs.

## Oblique Views



North Side



East Side



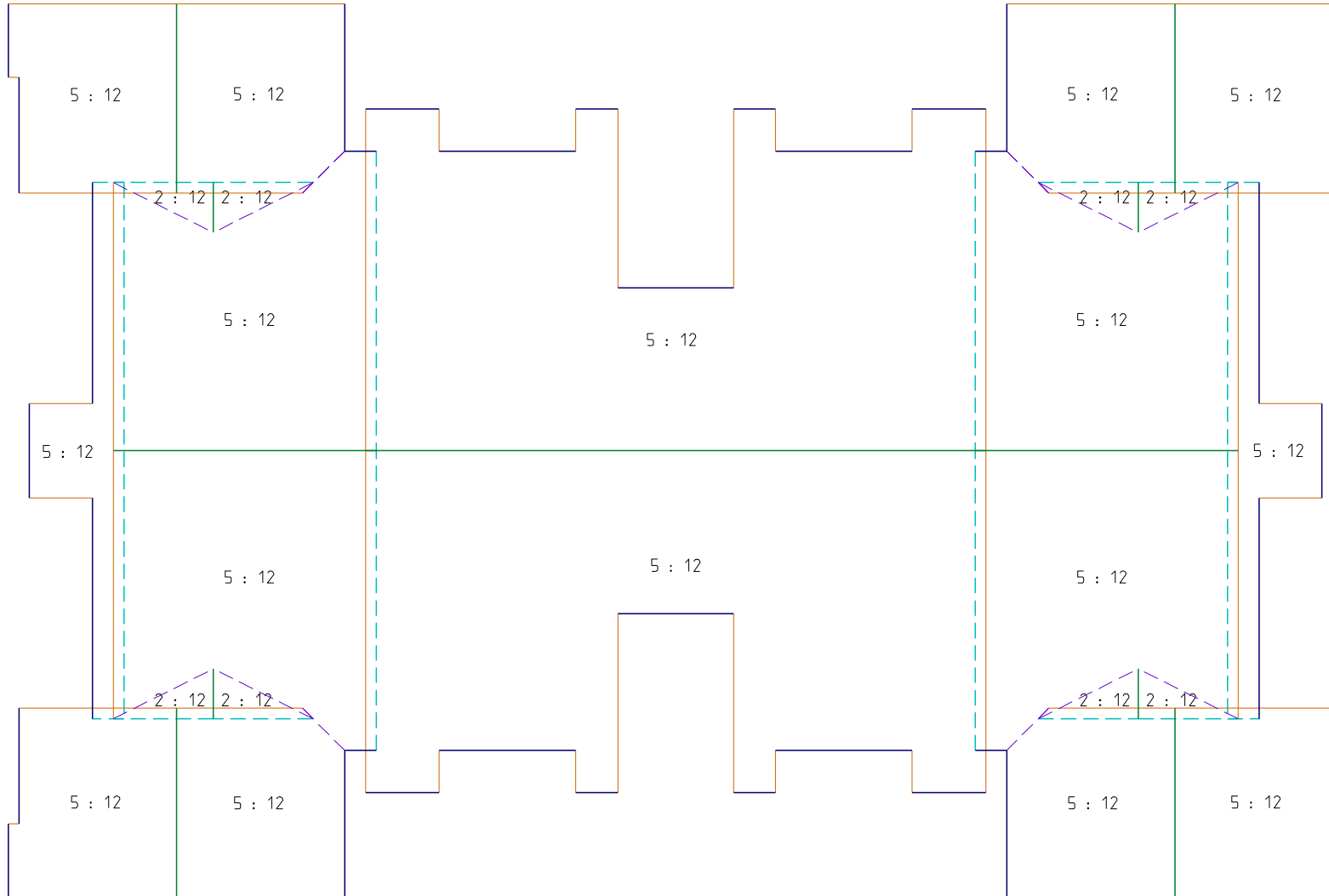
West Side



South Side

# Roof Pitch Analysis

# PITCH / AREA

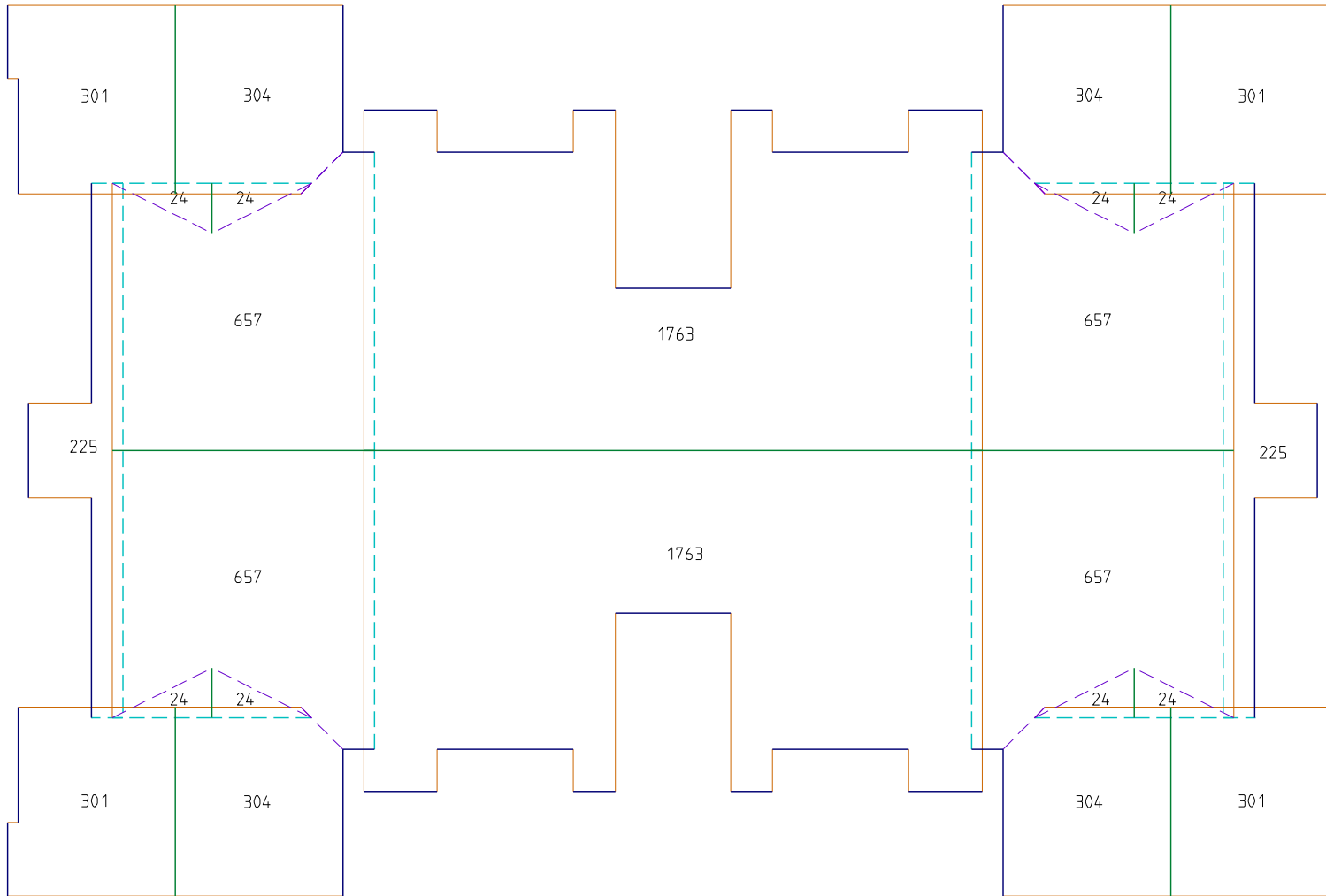


<i>Pitch/Slope</i>	<i>Area</i>
2 : 12	185.0ft <sup>2</sup>
5 : 12	9012.0ft <sup>2</sup>
<b>Total</b>	<b>9197.0ft<sup>2</sup></b>

For some facets, pitch labels have been removed for readability

# Roof Area Analysis

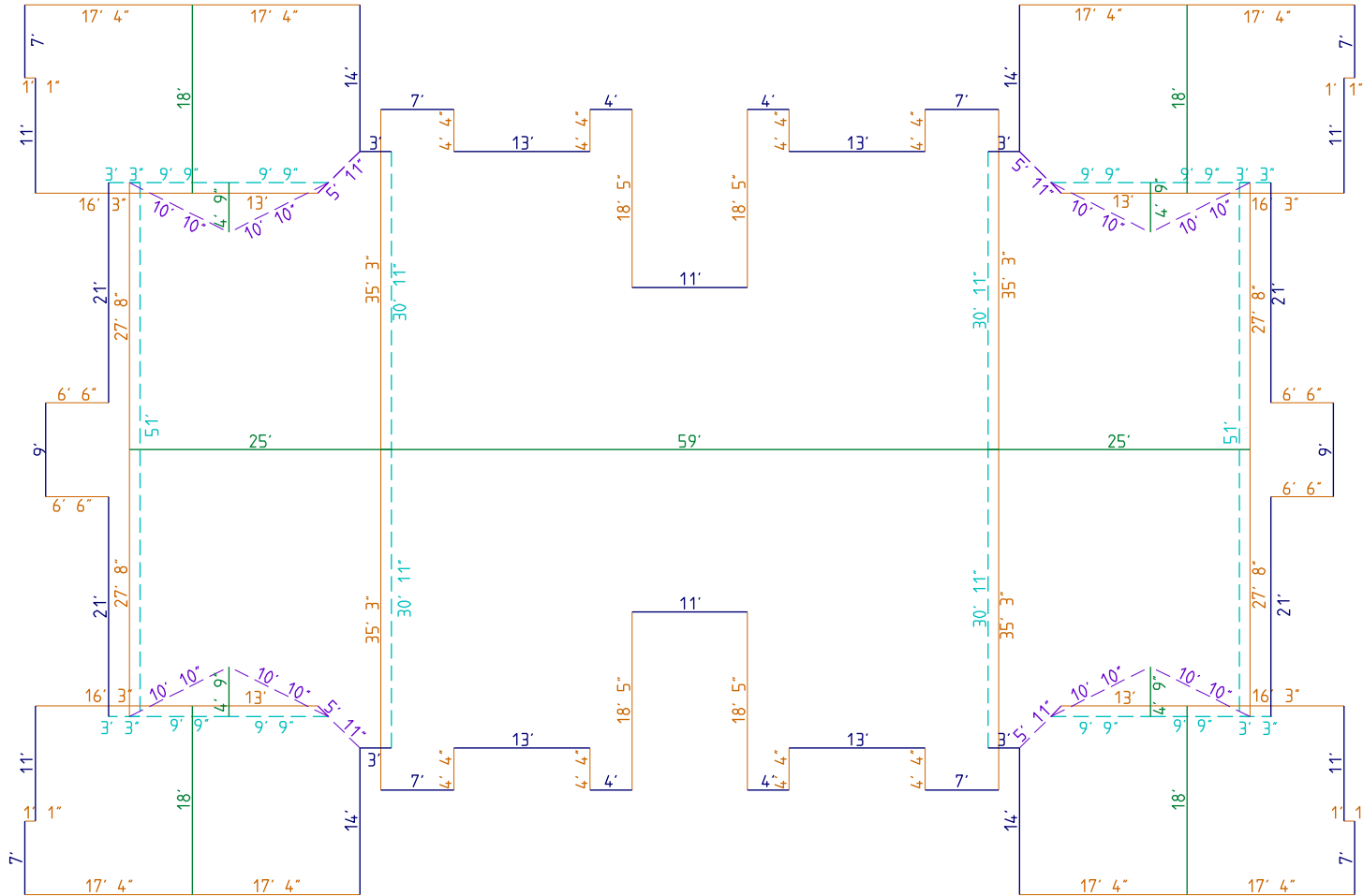
# Waste Calculations



Waste %	Roof Squares
5%	96.56
10%	101.16
15%	105.75
20%	110.35

Area of each roof facet is rounded to the nearest foot for readability

# Roof Length Analysis



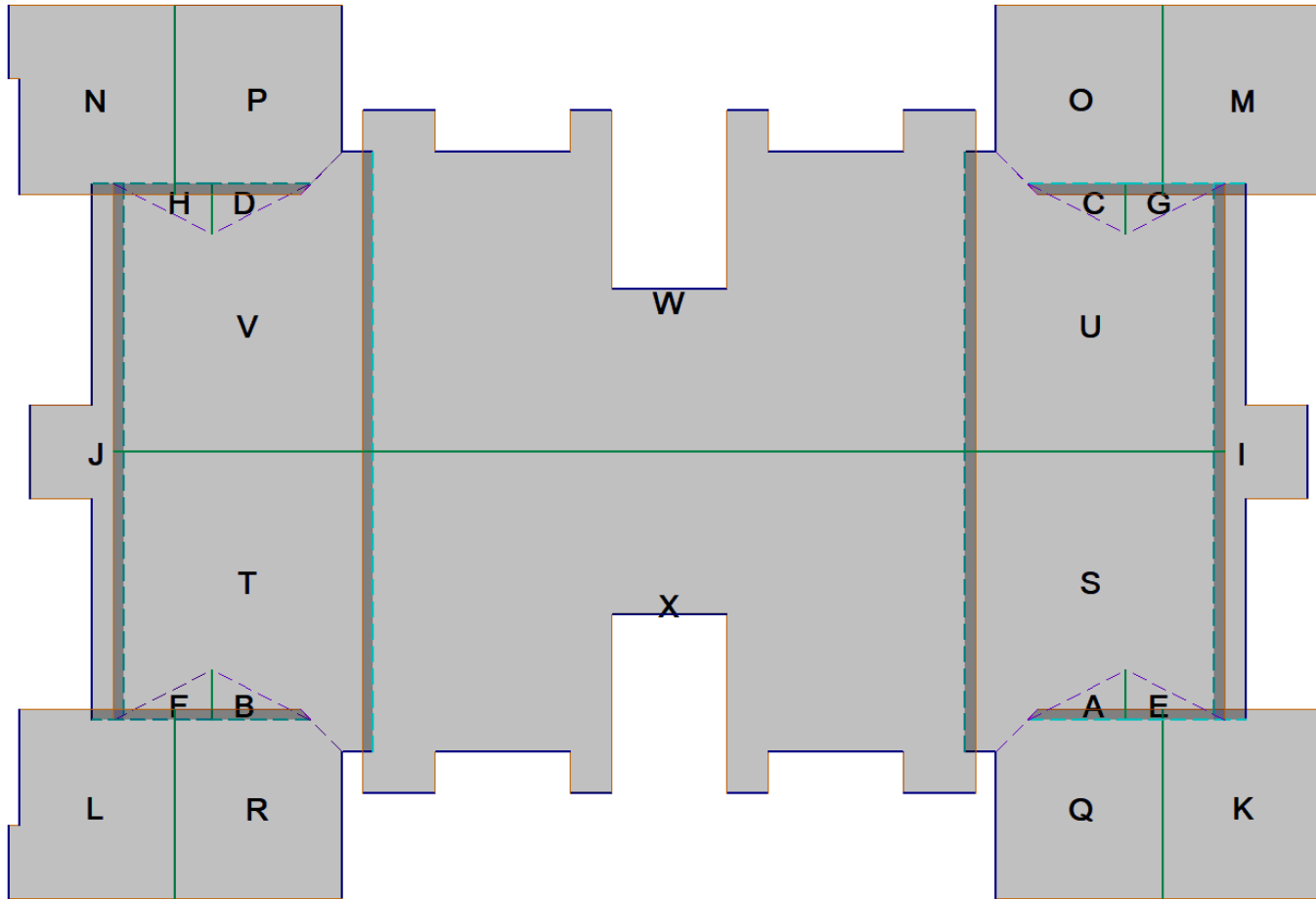
Some Length segments are rounded to the nearest whole number for readability

## Drawing Key

Drip-Edge/Eaves	Rakes	Ridges	Hips	Valleys	Headwall Flashing	Step Flashing
Calculations does not include waste. Measurements do not account for miscellaneous roof structures or penetrations and should be field verified on site to ensure accuracy before finalizing a bid or ordering roof materials.						

## Roof Facets Labels

## Facet Table



Facet	Area	Pitch/Slope
A	24ft <sup>2</sup>	2 : 12
B	24ft <sup>2</sup>	2 : 12
C	24ft <sup>2</sup>	2 : 12
D	24ft <sup>2</sup>	2 : 12
E	24ft <sup>2</sup>	2 : 12
F	24ft <sup>2</sup>	2 : 12
G	24ft <sup>2</sup>	2 : 12
H	24ft <sup>2</sup>	2 : 12
I	225ft <sup>2</sup>	5 : 12
J	225ft <sup>2</sup>	5 : 12
K	301ft <sup>2</sup>	5 : 12
L	301ft <sup>2</sup>	5 : 12
M	301ft <sup>2</sup>	5 : 12
N	301ft <sup>2</sup>	5 : 12
O	304ft <sup>2</sup>	5 : 12
P	304ft <sup>2</sup>	5 : 12
Q	304ft <sup>2</sup>	5 : 12
R	304ft <sup>2</sup>	5 : 12
S	657ft <sup>2</sup>	5 : 12
T	657ft <sup>2</sup>	5 : 12
U	657ft <sup>2</sup>	5 : 12
V	657ft <sup>2</sup>	5 : 12
W	1763ft <sup>2</sup>	5 : 12
X	1763ft <sup>2</sup>	5 : 12